



# FastoCloud for CCTV

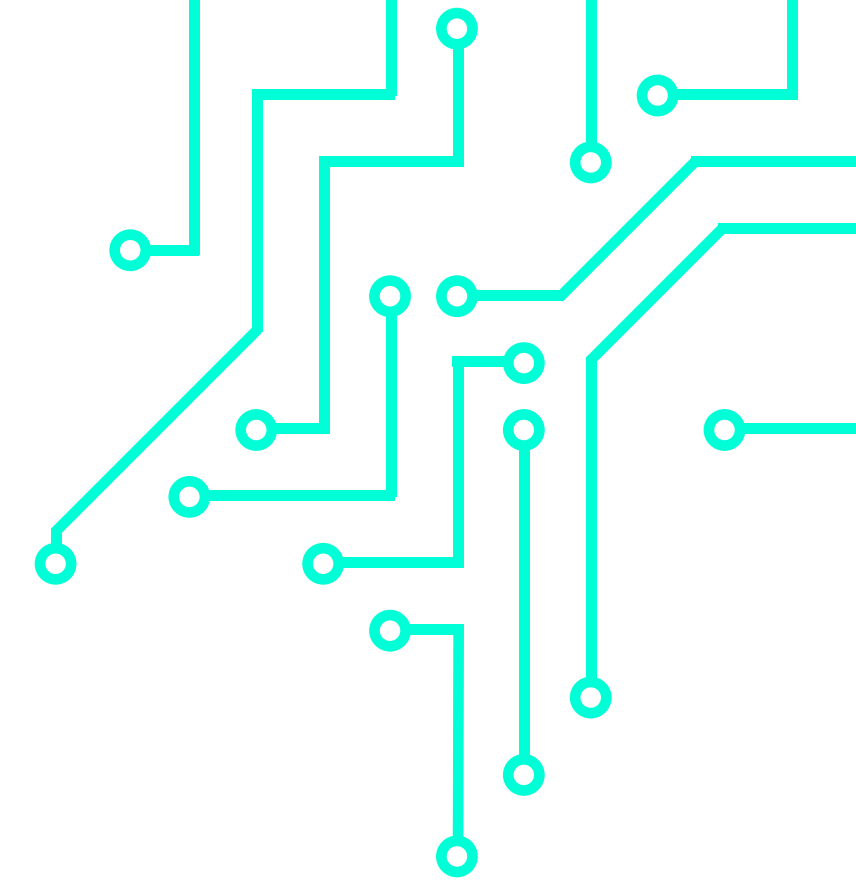


---

Welcome to FastoCloud, the software company that provides video solutions worldwide. Specializing in seamless video and audio streaming, we offer reliable tools for broadcasters, developers, retailers, and many more.



# FastoWatch by FastoCloud



1

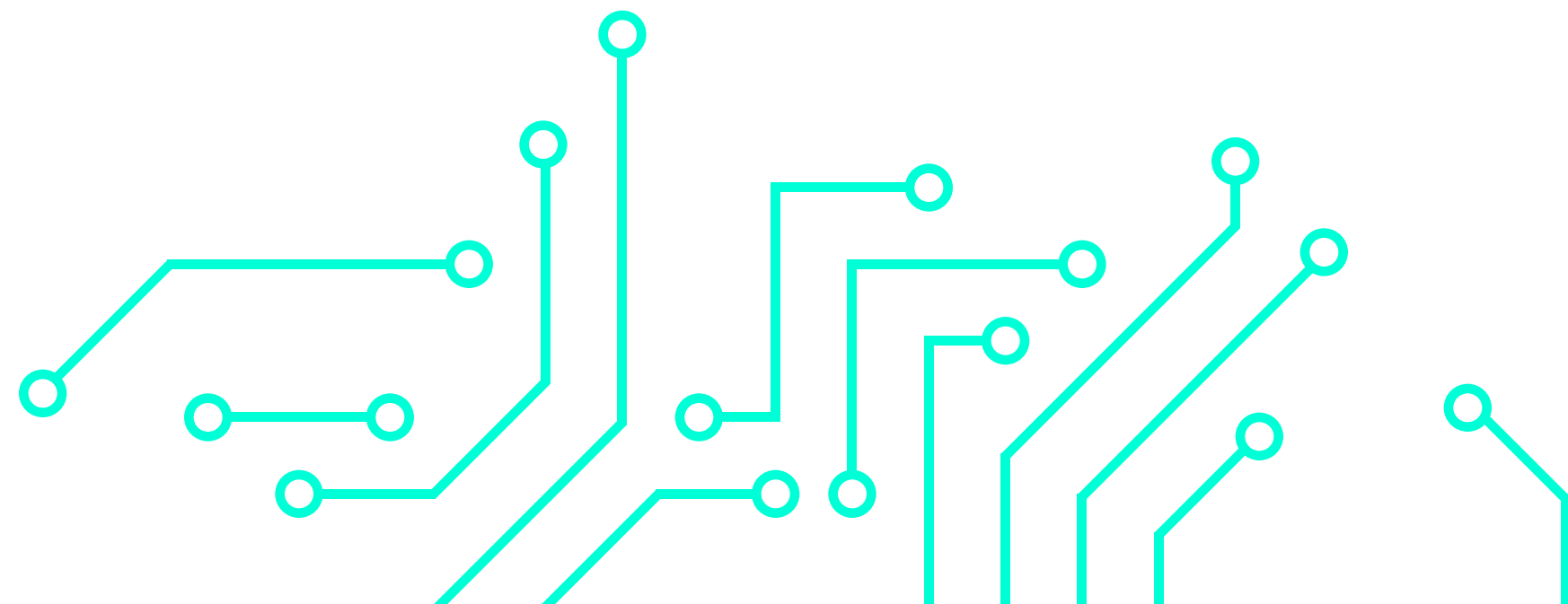
FastoCloud, with expertise in video solutions, introduces FastoWatch - integrating the best of Computer Vision and Video Analytics for advanced surveillance.

2

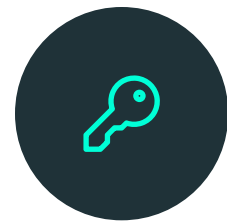
We utilize our knowledge in real-time video technologies to provide an effective and user-friendly CCTV experience.

3

Our team, dedicated to innovation, aims to support your unique security needs.



# Why FastoWatch



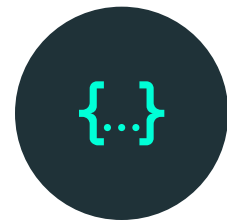
## Customized Turnkey Solution

Our solution is designed and implemented to match your specific needs.



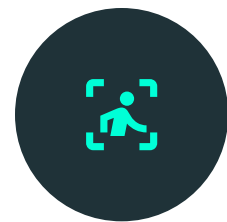
## Self-Hosted

Ensures data privacy, less cloud reliance, and internet independence.



## Single Code Owner

We maintain the entire codebase, eliminating the need for external elements or third-party involvement.



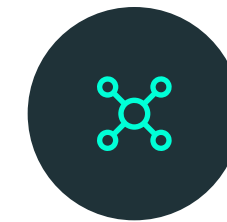
## Custom Detection Models

Our neural network is trained specifically for each client's unique needs.



## Cross-platform Real-time Players

Available for a range of platforms, including smart TVs, mobile and the web, ensuring ultra low latency.



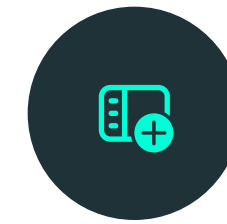
## API Integration

Clear documentation for smooth integration with other systems.



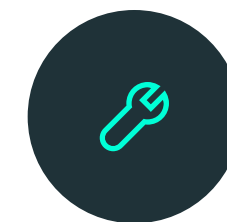
## Scalability

The system can be expanded using multiple servers for greater capacity, cloud-ready if required.



## User-Friendly Interface & Management Panel

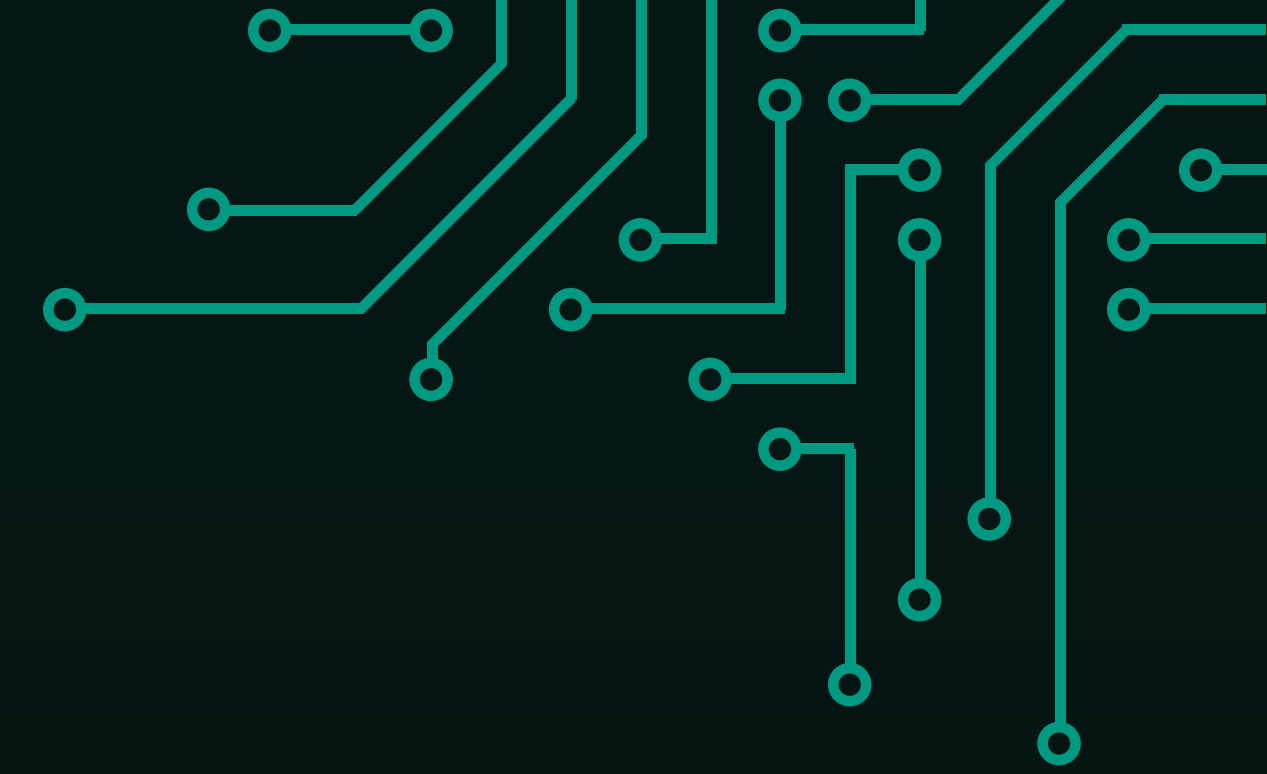
Crafted for easy monitoring, real-time analytics viewing and integrating payment systems.



## Support

Dedicated support for all user scenarios, covering assistance, bug fixes, software updates and server setup.

# What is inside FastoWatch?



## ● Interface



### Control Panel

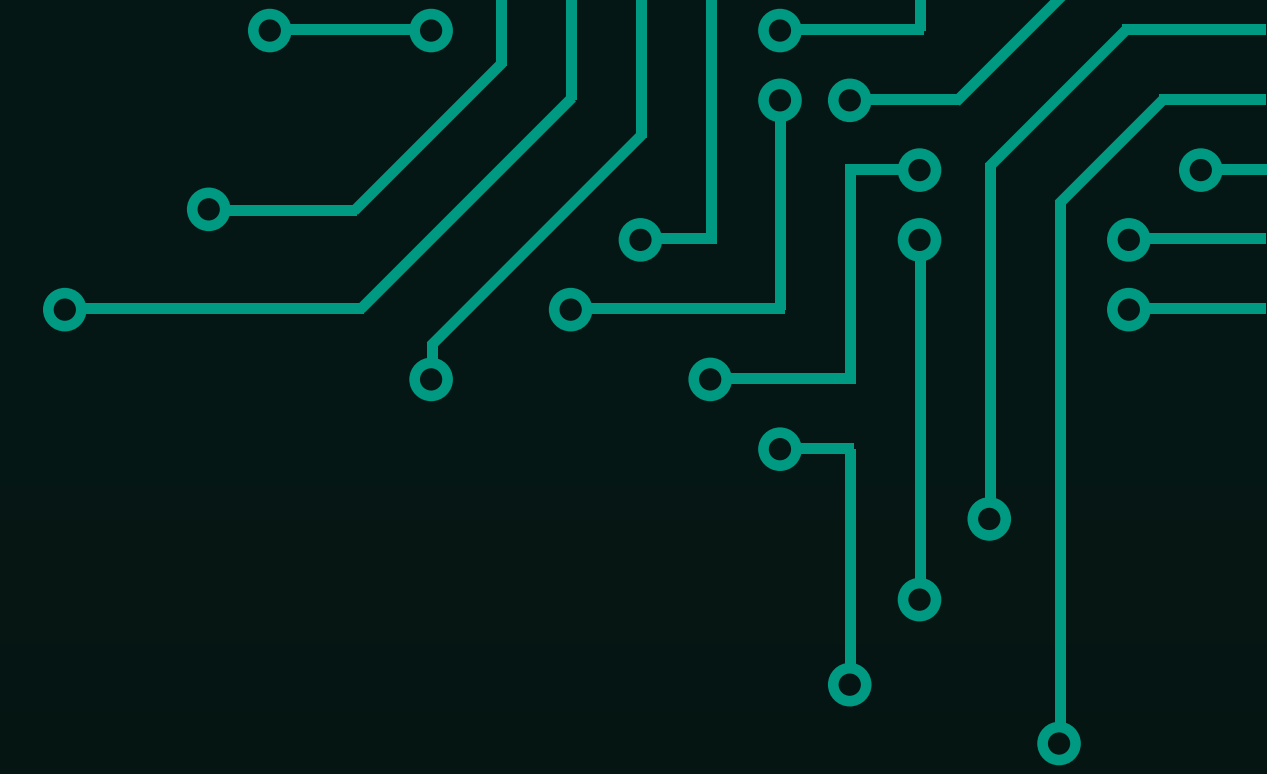
The central dashboard of the FastoWatch system. From here, users can manage and configure all the aspects of the system, ensuring smooth operation and overseeing all functionalities.



### Players web/app

This component enables users to view the camera feeds directly from any web browser or through a dedicated app. It offers a seamless streaming experience, with intuitive controls and a user-friendly interface.

# What is inside FastoWatch?

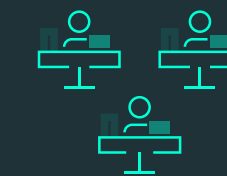


## ● Core components



### FastoCloud Media Server

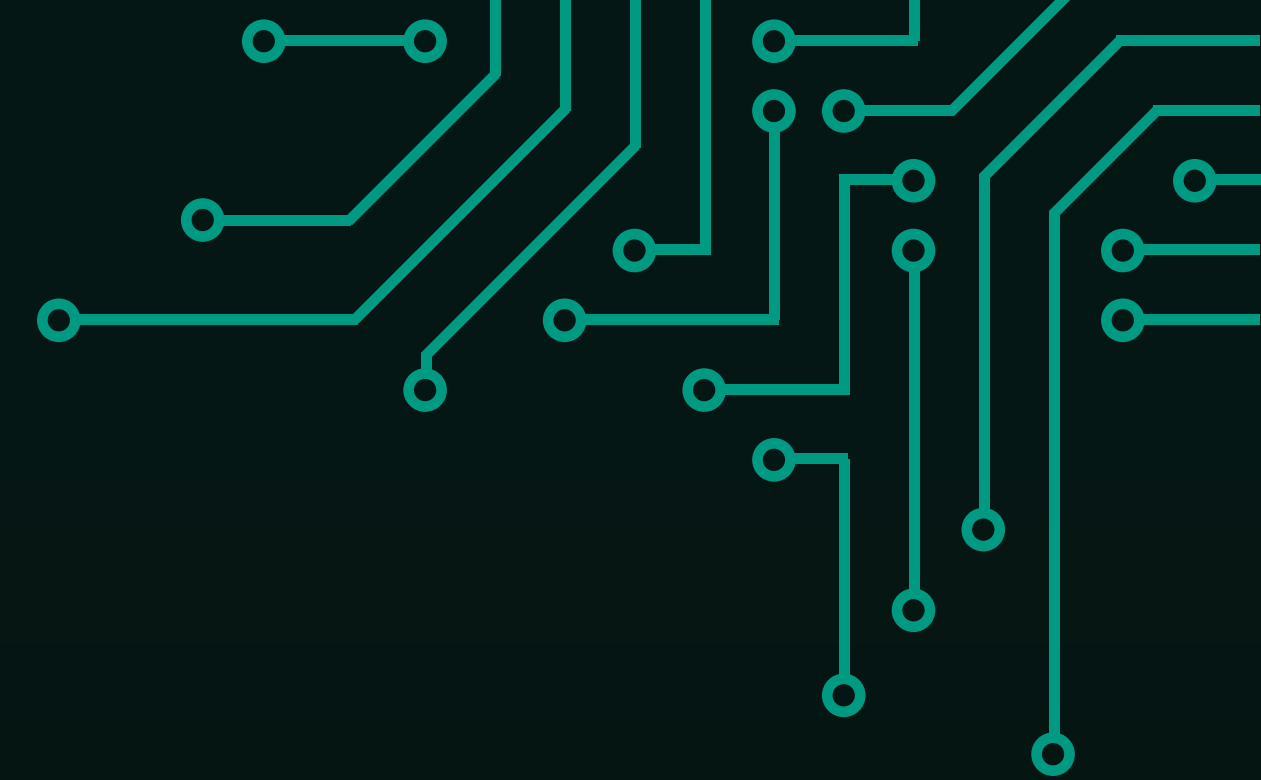
The heart of the FastoWatch streaming capabilities. A robust backend server responsible for the real-time transcoding of video streams. It can handle any codec and protocol, ensuring universal compatibility and smooth playback across different devices and platforms.



### External Modules

This feature provides flexibility to the FastoWatch system. Users can enhance and expand the system's functionalities by connecting various external modules. Whether it's integrating with other software or adding new features, this modular approach ensures the system remains adaptable to changing needs.

# What is inside FastoWatch?

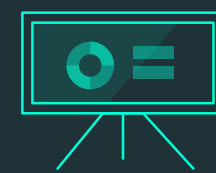


## ● Advantages



### Reports

An in-built feature that generates detailed logs and summaries of system activity. This could include data on motion detections, user activity, system health, and more, assisting administrators in maintaining and improving the system.



### Analytics

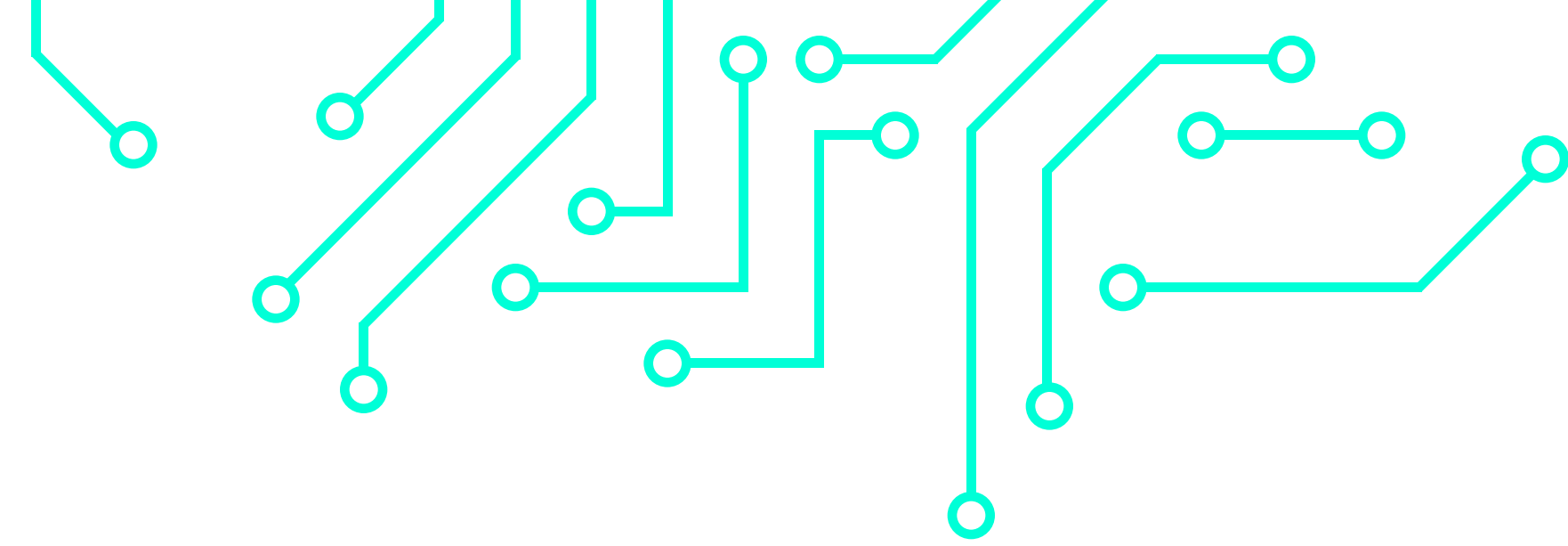
Uses sophisticated algorithms and machine learning to gain insights from video footage. This could include crowd counting, object recognition, or behavior analysis, transforming raw video data into actionable intelligence.



### Security and Encryption

Ensures the integrity and confidentiality of data within FastoWatch. From end-to-end encryption of video feeds to secure user access controls, this component safeguards against unauthorized access and potential cyber threats.

# For whom?



## Construction

Monitor projects in real-time, ensure worker safety, and optimize resource use.



## Retail

Insights into customer behavior, inventory oversight, and store optimization.



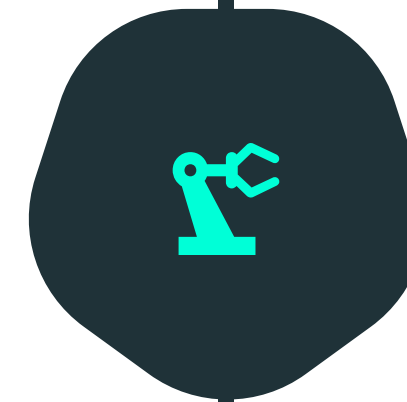
## Service Companies

(Residential or office buildings)  
Streamlined access control, enhanced safety measures and efficient maintenance scheduling.



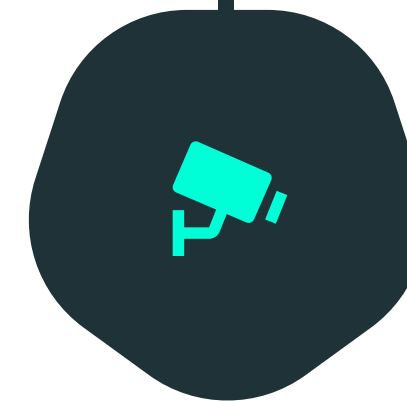
## Self-driving Vehicles

Safer navigation, real-time traffic updates, and predictive maintenance.



## Manufacturing

Oversight of production, quality control, and equipment optimization.



## Smart Cities

Infrastructure monitoring, traffic management, and improved public services.

# Full feature list



## 01 Detection Modules

Automatic identification of specific events or patterns in the video feed.

## 02 Notification Modules

Alerts the user when a particular event is detected in real-time.

## 03 Ultra Low Latency

Ensures real-time video streaming with barely noticeable delay.

## 04 Advanced Analytics

Gathers and presents data-driven insights from both current and past video streams.

## 05 Timeline

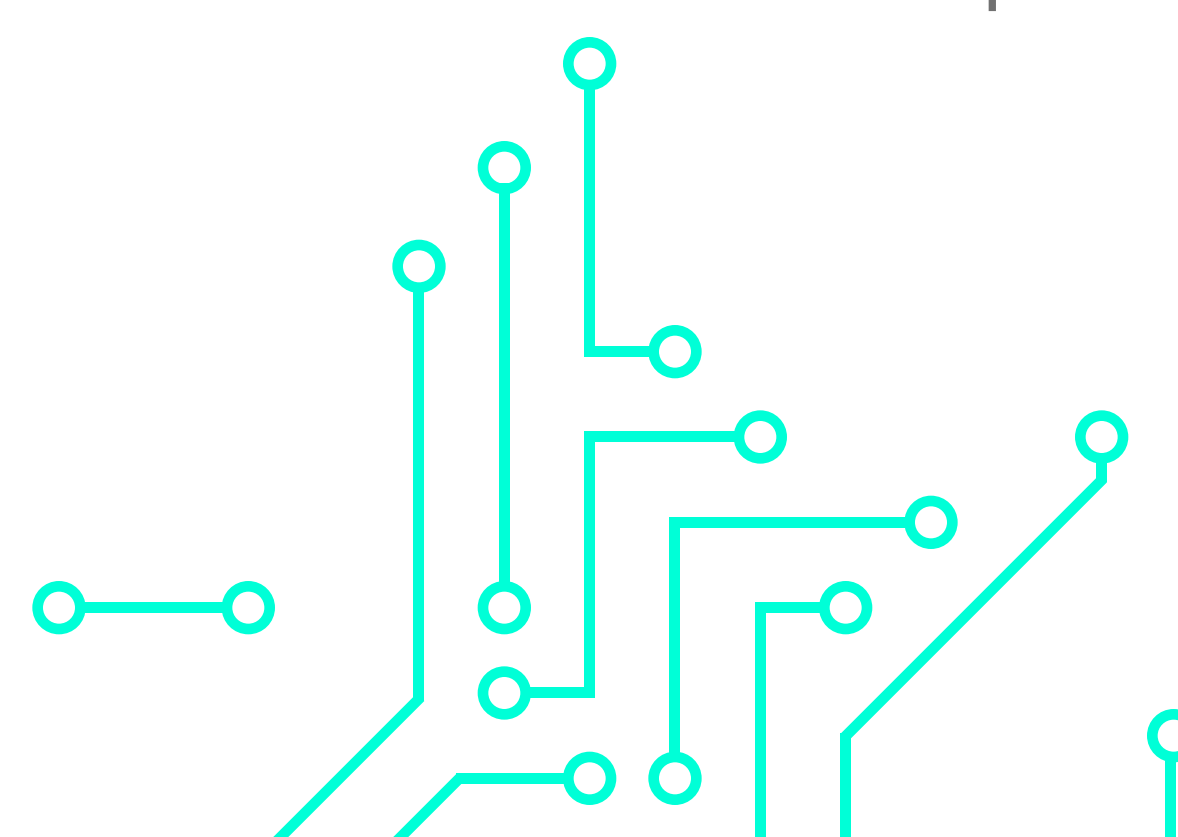
A chronological record of detected events, allowing users to review incidents easily.

## 06 Lock

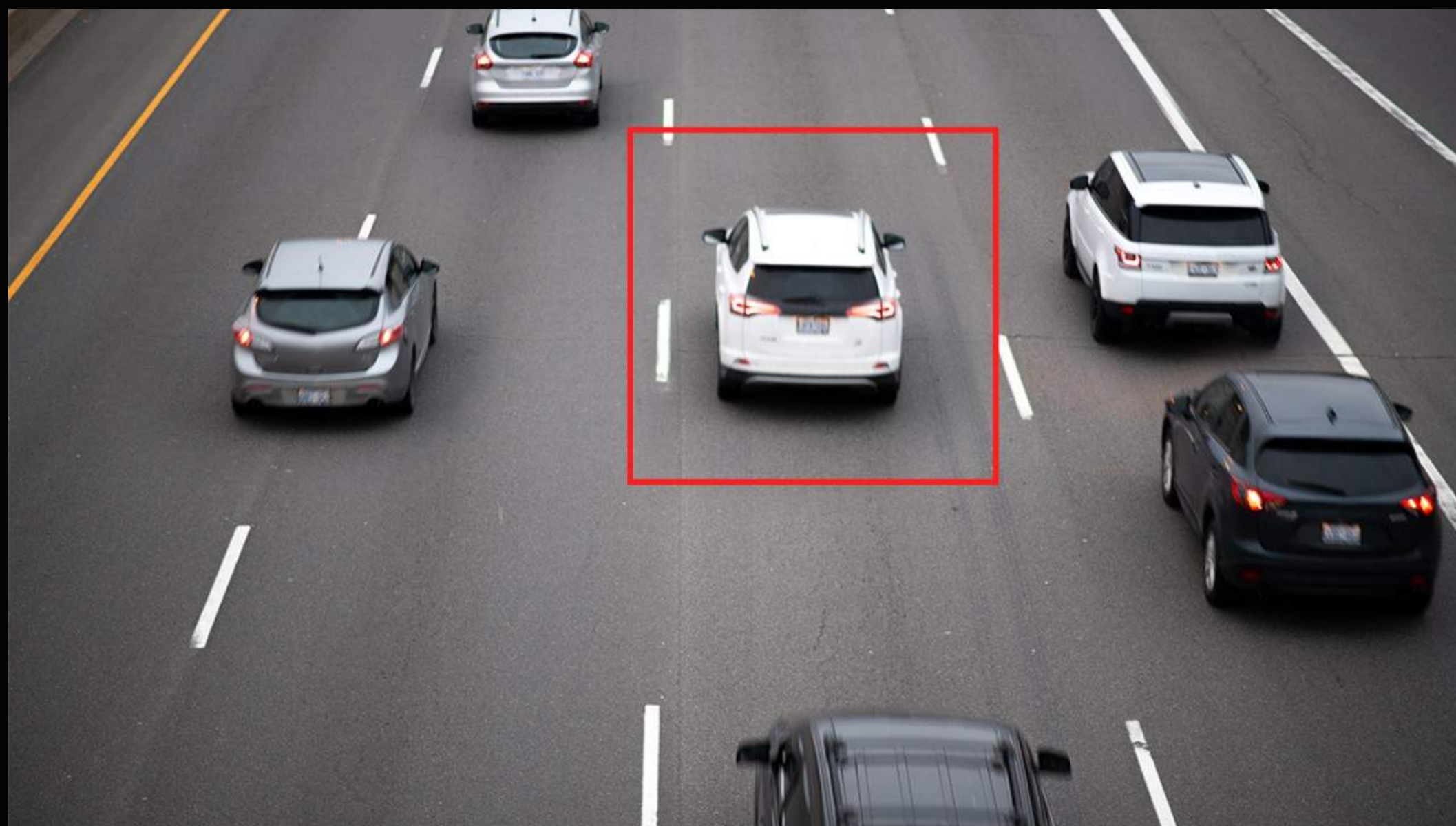
Allows users to selectively save and archive specific events, optimizing storage.

## 07 Custom Neuron Models

Enables integration of user-defined AI models for specialized detection tasks.



# FastoCloud for CCTV



# FastoCloud for CCTV



---

INVEST IN OUR COMPREHENSIVE SOLUTION TODAY AND UNLOCK  
THE FULL POTENTIAL OF YOUR VIDEO SURVEILLANCE SYSTEM.

Contact us now to get started!

● [info@fastocloud.com](mailto:info@fastocloud.com)

● [fastocloud.com](http://fastocloud.com)

---